



Tuesday, October 14, 2008, 11:14 am

Coming Soon

Check out the all-new NBCLosAngeles.com



Home > News

Site Index

- Home
Video
News
Olympic Zone
As Seen on NBC4
Most Popular Stories
Weather Forecast
Traffic Report
Entertainment
Sports News
Health
Contests

- Photo Galleries
Politics
Blogs
Green Is Universal
Community Events
Financial News
Family
Education
Employment
Food
House & Home
Quake Safe
Pros 4 You
Marketplace
About KNBC
NBC Local Media
Digital Tools
Advertise With Us
Other Local Partners
Disable Flyout

Search [input] [SITE] [WEB]

Upload Video

Get RSS

E-Mail Alerts

Contact Us

Advertise With Us

News

LAUSD Water Investigation: School List



Click here for an EPA guide to understanding lead in water at schools.

KNBC found higher than the EPA standard of lead at the following locations:

Alta Loma Elementary
Fountain located on the far side of the campus, across from the blacktop, parallel to handball courts. Lead Level 15

Calvert Elementary
Sink used for drinking water inside nurse's office. Lead Level 39

Gardener Elementary
Fountain in Kindergarten area, located at back of school. Lead Level 21

Marvin Avenue Elementary
Fountain located around the corner the front of gate. Lead Level 32
Fountain located behind a wall, dividing it from lunch tables and classrooms, tucked in a nook. Lead Level 22
Fountain located on far right side of campus, near boys and girls bathroom. Lead Level 19

Pacoima Elementary
Fountain located in the cafeteria area, by the wall near lunch tables. Lead Level 16

Reseda Elementary
Fountain Between boys and girls bathroom near main office. Lead level 21

San Pedro Elementary
Fountain located to the left of classroom 17. Lead Level 17

Saticoy Elementary
Fountain Located in front of playground blacktop. Lead Level 21

Woodlake Avenue Elementary
Fountain located on the east wall of building containing room 13, northwest of the administration building. Lead Level 32 (The school shut down this fountain in 9/07 after it tested to have an unsafe level of lead. KNBC found the fountain working again on 3/08 even though our test showed it still had a high level of lead.)

Here is an additional list of drinking fountains where the water had a significant amount of lead, but less than the USEPA's guideline of "unsafe." According to KNBC's lead expert Brian Daly, if a child drinks from these fountains frequently, they could ingest a significant amount of lead. Daly said these fountains should be on an LAUSD "watch list," meaning these fountains should be tested periodically to see if lead levels rise. Because pipes and fountains corrode over time, the lead level in the water could increase.

Alta Loma Elementary
White fountain located in Kindergarten area, to the right of classroom 20. Lead Level 14
Fountain located in Kindergarten area, to the right of classroom 22. Lead Level 12
Fountain located near handball courts. Lead Level 8.2

Bassett Elementary
Fountain in Kindergarten playground area. Lead Level 9.5

Calvert Elementary
Fountain to the left of cafeteria. Lead Level 9

E-Mail News Alerts
Get breaking news, daily headlines and more. [GO]

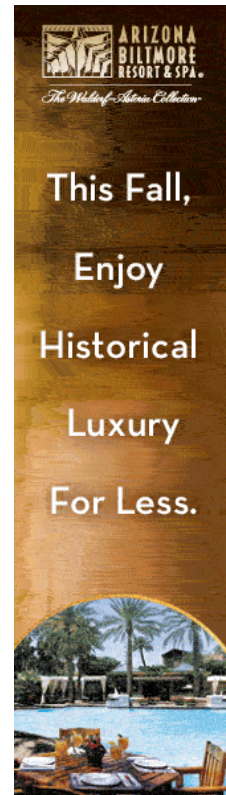
Most Popular Stories

Live Video Inside: Marek, Sesnon Fires Rage

Southland Wildfires: Evacuations, Schools, Road Closures

Canter's Deli Celebrates 60 Years - 60¢ Corned Beef

» More Most Popular



Credit Report

Your Experian, Equifax & Transunion Credit Report



Site Index

Home
Video
News
Olympic Zone
As Seen on NBC4
Most Popular Stories
Weather Forecast
Traffic Report
Entertainment
Sports News
Health
Contests
Photo Galleries
Politics
Blogs
Green Is Universal
Community Events
Financial News
Family
Education
Employment
Food
House & Home
Quake Safe
Pros 4 You
Marketplace
About KNBC
NBC Local Media
Digital Tools
Advertise With Us
Other Local Partners
Disable Flyout

Fountain located near handicapped boys/girls bathroom. In the middle of bathroom, tucked in a nook off blacktop. To the right of the fountain are two double doors into the school. Lead Level 13

San Pedro Elementary
Located on far left of second floor. Lead Level 8.8

Saticoy Elementary
Fountain in Kindergarten area, next to room K-4. Lead Level 9

Vermont Elementary
Fountain in front of school, by jungle gym equipment. Lead Level 8.4

The following are more LAUSD schools where unsafe amounts of lead were found in drinking fountains in recent years. These tests results were done by the school district:

(Sorted by school, displayed by date, lead level and water source location)

Ann Elementary--Los Angeles
Sept. 1997
- Lead level: 46.0 ppb, Inside auditorium restroom
- Lead level: 15.6, Inside room #22

Sept. 1994
-Lead level: 24.92, Location unknown

Aug. 1994
-Lead level: 17.20, Location unknown
-Lead level: 32.48, Location unknown

Bright Elementary--Los Angeles
May 2000
-Lead level: 16ppb, Main building south wall

Fleming Middle School--Lomita
Aug. 1997
-Lead level: 41.9ppb, South wing – SE

Lawrence Middle School--Chatsworth
May 1998
-Lead level: 15ppb, Outside faucet, building 24-26
-Lead level: 53, Outside faucet, building 24-26
-Lead level: 41, Outside faucet, building 24-26

Mann Middle School--Los Angeles
Dec. 1999
-Lead level: 80ppb, Cafeteria kitchen, East island sink

O'Melveny School--San Fernando
July 2000
-Lead level: 27ppb, Hallway adjacent to Room 12

San Antonio Elementary--Huntington Park
Mar. 2000
-Lead level: 15ppb, Drinking fountain in K1
-Lead level: 24, Drinking fountain in Room 5

San Gabriel Elementary--South Gate
Oct. 2000
-Lead level: 71ppb, Main kitchen north dishwashing sink
-Lead level: 130, Main kitchen, southeast wall, hand sink
-Lead level: 22, Faculty lounge refrigerated drinking fountain
-Lead level: 18, Faculty lounge refrigerated drinking fountain
-Lead level: 16, Faculty lounge kitchenette sink
-Lead level: 33, Multi-purpose building exterior southwest fountain
-Lead level: 49, Multi-purpose building exterior southeast fountain
-Lead level: 19, Kindergarten building Room 18 drinking fountain

Charnock Elementary
Through the faculty gate, straight ahead and veer to left. Fountain is between 2 sets of portable classrooms under a mural painted on wall. On left side. Lead Level 7.3
Through the faculty gate, straight ahead and veer to left. Fountain is between 2 sets of portable classrooms under a mural painted on wall. This one is on right side. Lead Level 7

Marvin Elementary
Fountain located to the right of cafeteria window, near the lunch tables. Lead Level 11

Pacoima Elementary
Fountain located next to boys and girls bathroom, in the corner near two double doors. Lead Level 7.3
Fountain in Kindergarten area. Fountain is on the right if you are facing the wall. Lead Level 9.5

Credit
Picture. Get your Experian, Equifax & Transunion Credit Score & Report Instantly. View Online for free. **More**



NBC.COM | MSNBC.COM |
CNBC.COM | UNIVERSAL
STUDIOS | ACCESS
HOLLYWOOD | VILLAGE
BRAVOTV.COM |
USANETWORK.COM |
SCIFI.COM | NBC STATIONS |
REELTALKTV.COM |
TELEMUNDO 52

©2008 NBC Universal, Inc

Get RSS XML

ADVERTISEMENT

Color Business Cards from \$35	Self Storage Los Angeles	Charter a Jet with Elite Jets Los Angeles Porsche Dealer
All Inclusive Jamaican Resorts	Balance Transfers	

-Lead level: 48, Kindergarten building exterior drinking fountain adjacent to Room 18

Portions 2008 Internet Broadcasting Systems, Inc. All rights reserved. Terms of Use | Privacy Policy | Advertising Information | Contact Us

Site Index

Home
Video
News
Olympic Zone
As Seen on NBC4
Most Popular Stories
Weather Forecast
Traffic Report
Entertainment
Sports News
Health
Contests
Photo Galleries
Politics
Blogs
Green Is Universal
Community Events
Financial News
Family
Education
Employment
Food
House & Home
Quake Safe
Pros 4 You
Marketplace
About KNBC
NBC Local Media
Digital Tools
Advertise With Us
Other Local Partners
Disable Flyout

Van Gogh Elementary--Granada Hills
 June 2000
 -Lead level: 16ppb, Room K-2
 -Lead level: 22, K-1 yard
 -Lead level: 56, K-2 yard

Aug. 1997
 -Lead level: 16.6, Cafe kitchen sink right faucet
 -Lead level: 53.1, Kindergarten South
 -Lead level: 27.9, Kindergarten North
 -Lead level: 38.0, K1 sink fountain
 -Lead level: 28.6, K2 sink fountain
 -Lead level: 19.7, Main DI. staff sink
 -Lead level: 28.8, Main nurse's sink
 -Lead level: 17.4, Outside #24 fountain west
 -Lead level: 22.9, Room 31 sink fountain
 -Lead level: 19.5, Outside #31 North
 -Lead level: 19.8, Room 43 sink

Woodlake Elementary--Woodland Hills
 June 2000
 -Lead level: 19ppb, Drinking fountain adjacent to auditorium
 -Lead level: 27, Drinking fountain adjacent to auditorium
 -Lead level: 80, Cafeteria kitchen restroom sink

Explore More:

Find out more about [Education](#), [Elementary and High School Education](#), [Elementary Education](#) and [Handball](#), or try these articles:

- October 14, 2008: [Southland Wildfires: Evacuations, Schools, Road Closures](#)
- May 15, 2008: [Council Memembers Seek Answers From LAUSD On Abuse Accusations](#)
- April 25, 2008: [Colleen Williams Reports: 'Book Wars'](#)
- April 21, 2008: [Lynwood Teacher: 'Guilty As Charged' To Count Of Child Porn](#)
- April 21, 2008: [Book Wars](#)

Copyright 2008 by [KNBC.com](#) and [KNBC \(NBC4 Los Angeles\)](#). All rights reserved. This material may not be published, broadcast, rewritten or redistributed.

Type in your comments to post to the forum

Name (appears on your post) _____

Comments _____

Type the numbers you see in the image on the right:



Please note by clicking on "Post Comment" you acknowledge that you have read the [Terms of Service](#) and the comment you are posting is in compliance with such terms. **Be polite.** Inappropriate posts may be removed by the moderator. [Send us your feedback](#).

Photo Galleries



Snake In Mailbox Bites Mailman

A Florida postal carrier is recovering after being bitten by a snake hidden inside a mailbox.

 [Video](#) | [Images](#)

[Gorilla Kills Offspring At Zoo](#)

[The White House's Most Memorable Kids](#)

[Competition Crowns Wife-Carrying Champ](#)

[New Celebrity Parents](#)

[Which Wagons Are Top For 2009?](#)

[NFL Cheerleaders](#)

[Athletes Who've Dabbled In Acting](#)

Site Index

Home
Video
News
Olympic Zone
As Seen on NBC4
Most Popular Stories
Weather Forecast
Traffic Report
Entertainment
Sports News
Health
Contests
Photo Galleries
Politics
Blogs
Green Is Universal
Community Events
Financial News
Family
Education
Employment
Food
House & Home
Quake Safe
Pros 4 You
Marketplace
About KNBC
NBC Local Media
Digital Tools
Advertise With Us
Other Local Partners
Disable Flyout

PhotoVote: Show Us Your 'Pets At The Park'

We know it's not just dogs who love the park, so this week PhotoVote invites you to share your best "Pets At The Park" photos. [More](#)



Sponsored Links

No Time for School? Graduate Online

Get a Degree in as Few as 2 Yrs- Graduate Faster with Online Classes. www.ClassesUSA.com

See Today's Mortgage Rates

Calculate Your New Mortgage Payment. See Rates- No Credit Check Req. www.LowerMyBills.com

Links We Like

Sponsored Content

Recognize The Symptoms Of Digestive Ailments



Gastrointestinal ailments – whether temporary or chronic – can be unbearable. Learn how to recognize symptoms and treat digestive woes. [More](#)

Ten Ways To Make Your Home More Cozy



If you're starting to feel like your home needs a little warmth, try these helpful hints to make your living space just a little more cozy. [More](#)

Learn About The Top Fitness Blunders



Whether you're new to working out or an experienced work out warrior, most people make the same mistakes when it comes to their routine. [More](#)

Learn All About Restless Leg Syndrome



Restless Leg Syndrome can be calmed. Learn symptoms, treatments and management for RLS here. [More](#)

Like online video? Then you'll love [Now See This](#).